



**DIRECTION: Pierre Thys**



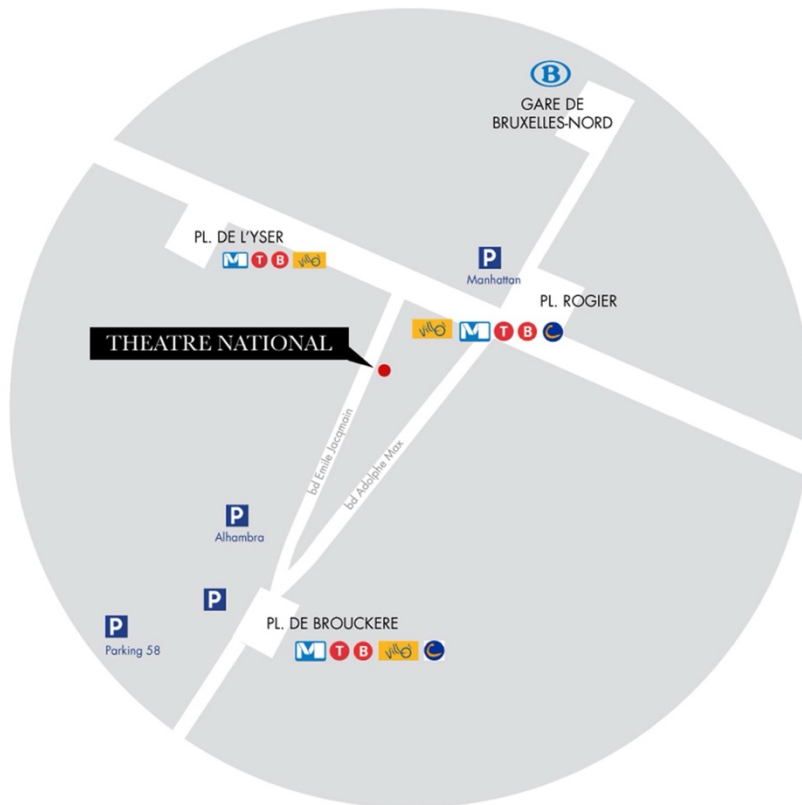
**THEATRE NATIONAL**  
**Bd Emile Jacqmain 111-115,**  
**B-1000 Brussels**  
**Ph: +32 (0)2/203.41.55**

## Technical team contacts

<b>Technical Director:</b>	<b>Guillaume Stasse</b> Phone: +32(0)2/274 23 54 Mobile: +32(0)/473 30 48 22 Email: <a href="mailto:gstasse@theatrenational.be">gstasse@theatrenational.be</a>
<b>Assistant Technical Director :</b>	<b>Cédric Otte</b> Téléphone :+32(0)2/274 23 94 Portable : +32(0)477/93 69 76 e-mail : <a href="mailto:cotte@theatrenational.be">cotte@theatrenational.be</a>
<b>Stage Managers:</b>	<b>Florence Dubru</b> Téléphone :+32(0)2/274 23 95 Portable : +32(0)499/ 29 28 57 e-mail : <a href="mailto:fdubru@theatrenational.be">fdubru@theatrenational.be</a>  <b>Luc Loriaux</b> Téléphone : +32(0) 2 274 23 94 Portable : +32(0)498 88 44 71 e-mail : <a href="mailto:lloriaux@theatrenational.be">lloriaux@theatrenational.be</a>  <b>Pierre Ottinger</b> Téléphone :+32(0)2/274 23 42 Portable : +32(0)496 30 98 93 e-mail : <a href="mailto:pottinger@theatrenational.be">pottinger@theatrenational.be</a>  <b>Giuliana Rienzi</b> Téléphone :+32(0)2/274 23 66 Portable : +32(0) 479/88 64 01 e-mail : <a href="mailto:grienzi@theatrenational.be">grienzi@theatrenational.be</a>
<b>Head of Lighting department:</b>	<b>Gregory Hamdan</b> Mobile: +32(0)491/15 69 22 Email: <a href="mailto:ghamdan@theatrenational.be">ghamdan@theatrenational.be</a>
<b>Head of Sound department:</b>	<b>Jeison Pardo Rojas</b> Mobile: +32(0)495/60 98 80 Email: <a href="mailto:jpardo@theatrenational.be">jpardo@theatrenational.be</a>
<b>Head of Stage department:</b>	<b>Benoît Ausloos</b> Portable : +32(0) 476 27 70 11 e-mail : <a href="mailto:bausloos@theatrenational.be">bausloos@theatrenational.be</a>
<b>Head of video department:</b>	<b>Ludovic Desclin</b> Mobile: +32 (0)489/46 50 56 Email: <a href="mailto:ldesclin@theatrenational.be">ldesclin@theatrenational.be</a>
<b>Costume workshop manager:</b>	<b>Eugénie Poste</b> Mobile: +32 (0)486/08 52 84 Email: <a href="mailto:eposte@theatrenational.be">eposte@theatrenational.be</a>
<b>Director of the shared resources and construction structure :</b>	<b>Yvan Harcq</b> Téléphone : +32 (0)64/44 66 86 Portable : +32(0)495/22 00 65 e-mail : <a href="mailto:yharcq@theatrenational.be">yharcq@theatrenational.be</a>
<b>Workshop manager, shared resources and construction :</b>	<b>Joachim Pochet</b> Téléphone : +32 (0)64/44 66 86 Portable : +32(0)485 39 85 24 e-mail : <a href="mailto:jpochet@theatrenational.be">jpochet@theatrenational.be</a>

# HOW TO GET TO THE THEATRE NATIONAL

**111-115 Boulevard Emile Jacqmain  
B-1000 Brussels**



## By Tram

Lines 3, 4, 32 – stops **Rogier** or **De Brouckère**

Lines 25, 55 – stop **Rogier**

## By Metro

Lines 2, 6 – stop **Rogier**

Lines 1, 5 – stop **De Brouckère**

## By Bus

Line 88 – stops **Rogier** ou **De Brouckère**

Lines 29, 46, 66, 71, 86 – stop **De Brouckère**

Lines 58, 61 – stop **Rogier**

## By Noctis bus

On Friday and Saturday nights, every 30 minutes between 00:00 and 03:00 am: 11 Noctis buses leave from the **Anneessens** stop (to Kraainem, Herrmann-Debroux, Berchem Station, Parking Stalle...).

## By Train

Via Brussels North station

## By Villo! (bicycle renting)

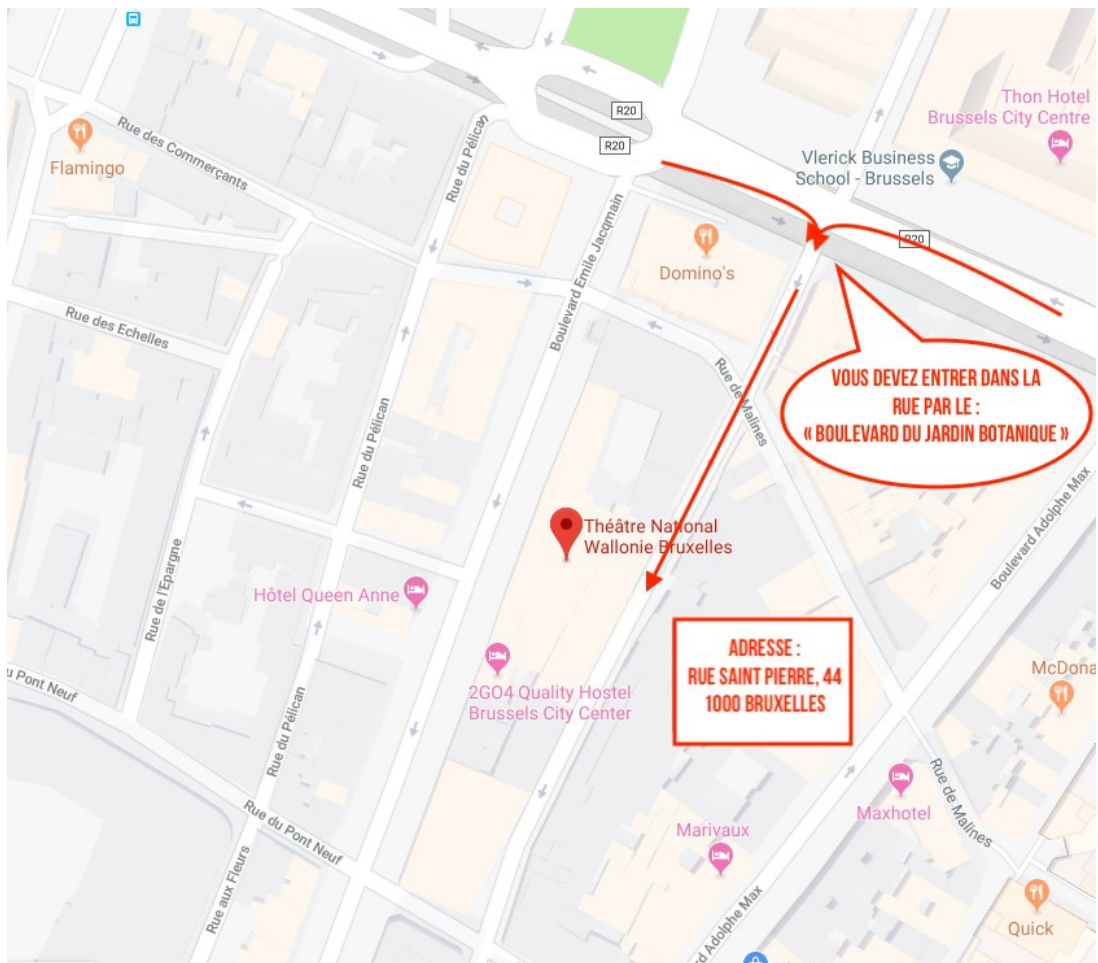
Station 21 – Place De Brouckère

Station 29 – Baudouin, rue de Laeken

Station 30 – Rue de Laeken (between street numbers 119 and 109)

## HOW TO REACH THE THEATRE NATIONAL BY TRUCK

### 44 Rue Saint Pierre B-1000 Brussels



# Technical note on infrastructures of the Théâtre National de la Fédération Wallonie-Bruxelles

## A The Theatre

### a) Building

#### I. Location of the building

The theatre is located in the centre of Brussels on Boulevard Emile Jacqmain 111-115.

#### II. Facilities present in the building

The building includes all facilities related to theatrical production and operation (except for the set construction workshop that is located outside Brussels), i.e.:

- 1 large venue with 752 seats (ground floor)
- 1 small venue (Jacques Huisman venue) with 252 seats (2nd floor)
- 1 multifunctional venue (The Studio) with 240 seats (4th floor)
- A public lobby
- Storage facilities (1st and 2nd basement)
- A costume workshop (5th floor)
- A recording studio (2nd basement)
- Offices for administrative, technical, promotional, and broadcasting staff ... (mostly open space offices)

#### III. Truck access to loading dock

The truck access is located in the Rue Saint-Pierre (at the back of the building). A semi-trailer truck can be parked in a recess in the facade next to the loading dock that gives direct access to the set elevator and the main stage. It is equipped with a dock leveller. Access from the dock to the main auditorium is through a double door which opens to a width of 2.37 m (2.19 m at the door handle). The door height is 3.5 m.

#### IV. Vertical traffic

In addition to the passenger lifts, vertical traffic between the truck loading dock, the venues and the storage areas is provided by a set elevator (also accessible to people) with a capacity of 7500 kg (6 m wide, 2.30 m deep and 3.20 m high) as well as a freight lift with a capacity of 1000 kg (1.10 m wide, 2.10 m deep and 2.10 m high).

#### V. Acoustics

Particular attention was paid from the outset of the project to the acoustic sound proofing between the venues, so that simultaneous use of all three venues is possible.

## b) The main venue

### I. General

The stage of the main venue is located on the ground floor of the building. The stage is topped with a stage cage and has removable floor traps. It is flanked by a backstage and a side stage for storage, on stage right.

The orchestra pit opens right in front of the proscenium arch.

The audience is separated from the stage by a flameproof metal curtain.

The venue is modular. In its basic configuration its 752 seats are placed on curved bleachers distributed in:

- 483 seats in parterre and dress circle
  - o 114 seats above the orchestra pit
  - o 241 seats on the telescopic bleacher
  - o 128 fixed seats (including 16 in the gallery)

The first 4 rows can be lowered onto the orchestra pit and retracted into a room in the 1st basement (without removing the seats). The next 7 rows are placed on a motorised telescopic bleacher (with the removal of 56 seats and the folding of the remaining 185).

- a balcony with 269 fixed seats (including 10 in the gallery)

The side stage gives access to the truck loading dock and to the set elevator.

### II. Main dimensions

#### • Stage

<u>Proscenium arch opening</u>	<u>20.80 m</u>
<u>Proscenium arch height</u>	<u>10.60 m</u>
<u>Width from walkway to walkway</u>	<u>21.00 m</u>
<u>Depth of the stage cage</u>	<u>12.70 m</u>
<u>Height underneath the grid</u>	<u>24.00 m</u>
<u>Depth of the backstage area (excluding walkway)</u>	<u>5.00 m</u>
<u>Width of the backstage area</u>	<u>20.00 m</u>
<u>Backstage clearance height</u>	<u>10.20 m</u>
<u>Depth of the side stage (stage right)</u>	<u>12.70 m</u>
<u>Width of the side stage</u>	<u>5.90 m</u>
<u>Side stage clearance height</u>	<u>7.38 m</u>
<u>Height under the stage</u>	<u>4.20 m</u>
<u>Main stage surface area</u>	<u>324 m<sup>2</sup></u>
<u>Backstage surface area</u>	<u>100 m<sup>2</sup></u>
<u>Side stage surface area</u>	<u>100 m<sup>2</sup></u>

- Orchestra pit (can be used as proscenium if raised to stage level)

<u>Depth at the centre</u>	<u>4.32 m</u>
<u>Depth at the ends</u>	<u>2.23 m</u>

Width in front of the proscenium arch	17.40 m
Maximum width	20.00 m
Height in bleacher position	-0.87m
Height in orchestra position	-1.75m
Maximum height	-4.45 m
Surface area	70 m <sup>2</sup>

- Playing surface area (folded bleachers)

Depth at the centre	30.00 m
Depth at the ends	27.00 m
Width	20.80 m
Surface area (including orchestra pit)	638 m <sup>2</sup>

### III. Stage equipment

- Stage floor
  - o The entire stage area (including backstage, side stage and orchestra pit) is covered with wood
  - o Floor panels of 1.10 m x 1.10 m can be removed from the stage and from part of the backstage area for a total surface area of 305 m<sup>2</sup>.
- Orchestra pit

The orchestra pit is motorised and can be raised in one piece.
- Flybars on stage
  - o 1 motorised rail for the stage curtain
  - o 3 motorised flybars (350 kg)
  - o 48 counterbalanced manual flybars (350 kg) each of which can be motorised by one of the 2 lifting assistance mechanisms
  - o 4 motorised lateral flybars (250 kg)
  - o 5 motorised backstage flybars
- Grid
  - o All rigging wires and pulleys are bundled together on the rigging system
  - o 70x50mm grating over the entire surface
  - o The grid is powered by dimming and direct electrical circuits, audio and DMX connections and is equipped with winches for lifting the flybars electrical cables if needed.
- Stage walkways
  - o 4 on stage right and 4 on stage left (including one on each side giving access to the front walkways)
  - o 3 backstage walkways
  - o All walkways are powered by dimming and direct electrical circuits, audio and DMX connections

- In the venue
  - o 2 technical walkways on the right and 2 on the left
  - o 1 mobile bridge (1000 kg distributed) along the proscenium arch
  - o 2 front walkways
  - o 3 motorised flybars between the lighting bridge and the first walkway
  - o All walkways are powered by dimming and direct electrical circuits, audio and DMX connections

**c) The small venue (Jacques Huisman venue)**

i) General

The stage of the small venue is located on the second floor of the building. The venue is frontal and has a fixed bleacher. Its 252 seats are on a curved bleacher forming one single unit.

The stage is fixed with two opening cross channels.

A proscenium (3.5 m deep) can be installed by removing the first 3 rows of seats (45 seats)

A right-left walkway for the comedians runs underneath the stage. The sound and lighting control rooms are located on the technical walkway. The left exit gives access to the set elevator.

ii) Main dimensions

• Stage

<u>Proscenium arch opening</u>	<u>10.00 m</u>
<u>Proscenium arch height</u>	<u>6.70 m</u>
<u>Stage height</u>	<u>0.75 m</u>
<u>Width from walkway to walkway</u>	<u>10.00 m</u>
<u>Stage depth</u>	<u>8.30 m</u>
<u>Width from wall to wall</u>	<u>17.85 m</u>
<u>Height underneath the flyloft</u>	<u>9.30 m</u>
<u>Stage surface area</u>	<u>140 m<sup>2</sup></u>
<u>Proscenium (on request) surface area</u>	<u>30 m<sup>2</sup></u>
<u>Proscenium maximum depth</u>	<u>3.8 m</u>
<u>Proscenium minimum depth</u>	<u>3.6 m</u>

iii) Stage equipment

• Stage flooring

The entire stage area (including exits) is covered with wood

• Fly facilities on the stage

- o 1 motorised pole for the stage curtain
- o 21 motorised poles (350 kg)
- o 2 motorised side poles (250 kg)

- Grid  
The grid is not accessible
- Stage walkways
  - o 1 on the right and 1 on the left giving access to the venue walkways, 1 walkway above the proscenium arch
  - o All walkways are powered by graduate control systems, direct feeds, audio and DMX connections.
- Venue
  - o 1 technical walkway on the right and 1 on the left, 2 front walkways
  - o All walkways are powered by graduate control systems, direct feeds, audio and DMX connections.

#### **d) The Studio (multifunctional venue)**

##### i) General

The Studio is located on the fourth floor of the building.

The venue is completely flat, with no stage or fixed bleachers.

A removable and adjustable bleacher can be installed according to needs. The bleacher can accommodate a maximum of 240 spectators (for safety reasons).

Direct access to the set elevator is provided.

##### ii) Main dimensions

- Stage

<u>Length from wall to wall</u>	<u>23.30 m</u>
<u>Width from wall to wall</u>	<u>18.00 m</u>
<u>Height underneath the fixed flyloft</u>	<u>8.00 m</u>
<u>Surface area</u>	<u>414 m<sup>2</sup></u>

##### iii) Stage equipment

- Stage flooring

The entire venue area is covered with wood

- Mesh

A technical mesh of 1.00 m x 1.50 m covers the entire surface of the venue

#### **e) Dressing rooms**

The building has a total of 11 dressing rooms for 30 comedians, including two rooms for hair dressing and make-up, located as follows:

- 3rd floor
  - 2 individual dressing rooms
  - 1 dressing room for 4 people
  - 2 dressing rooms for 5 people

- 1 dressing room for 6 people
- 2 hair dressing and make-up rooms
- 4th floor
  - 2 individual dressing rooms
  - 1 dressing room for 6 people

A laundry room and a room for costume maintenance are located on the 4th floor. A quick dressing room for 3 performers communicates directly with the main stage on the left side.

#### **f) Storage**

All storage rooms have direct and horizontal access with the set elevator and the freight lift. Doors and corridors shall be at least as high as the lift dimensions.

- 1st basement
  - curtain storage: 48 m<sup>2</sup> and 66 m<sup>2</sup>
  - electrical equipment storage: 210 m<sup>2</sup>
- 2nd basement
  - costumes storage: 200 m<sup>2</sup>
  - audio material storage: 100 m<sup>2</sup>
  - medium height (4 m) set storage: 340 m<sup>2</sup>
  - high height (7.5 m) set storage: 350 m<sup>2</sup>
  - storage of flooring and furniture: 140 m<sup>2</sup>
  - workshop machinists: 150 m<sup>2</sup>

#### **g) The sound studio**

The sound studio is located in the 2nd basement. It consists of a 65 m<sup>2</sup> recording studio, a 30 m<sup>2</sup> control room and a lobby for musicians.

The studio is fully equipped with top quality recording equipment (console, microphones, effects, computer signal processing, synthesizers...).

There is direct access to the set elevator, the freight lift, and a passenger lift.

#### **h) Costume workshop**

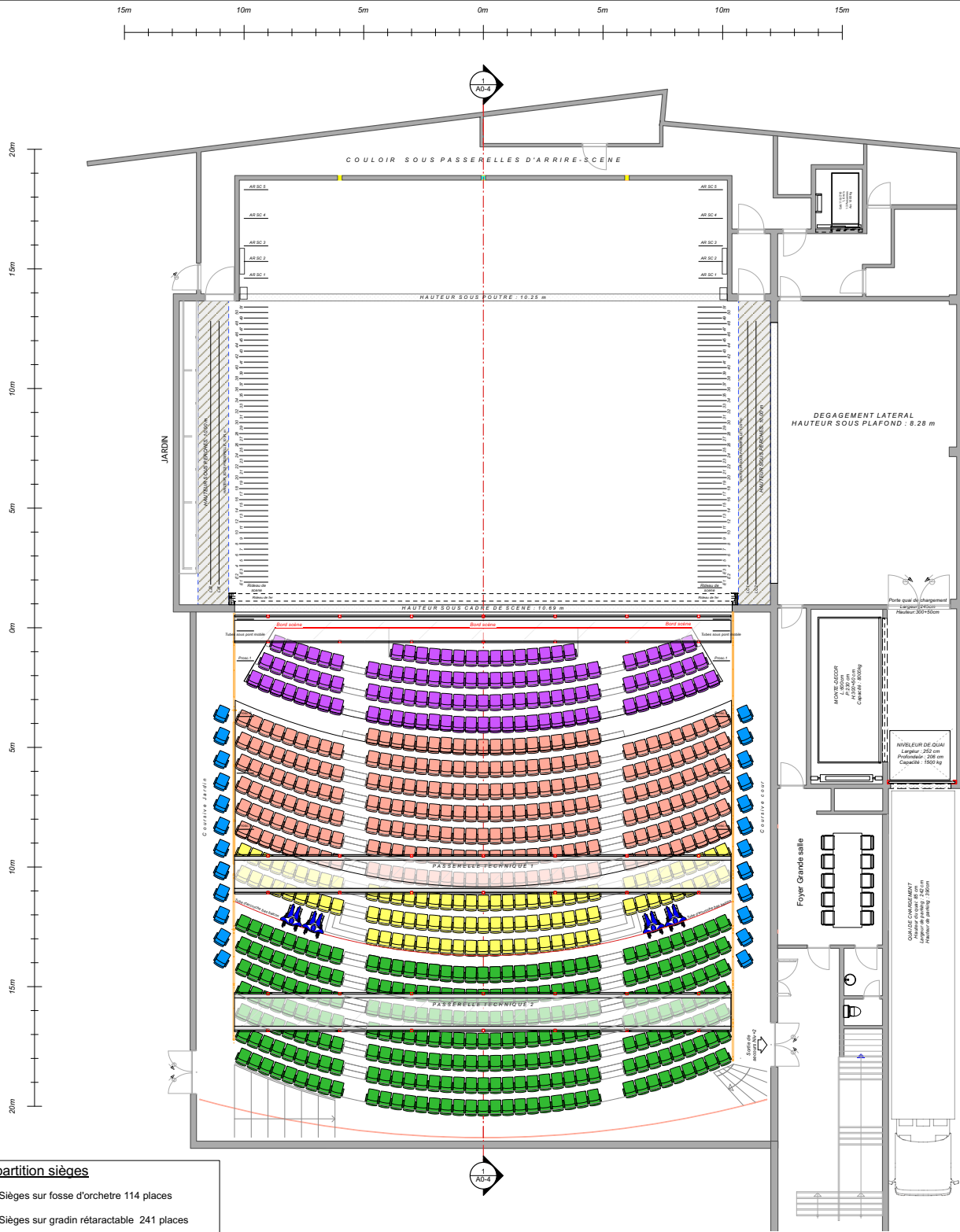
The costume workshop is located on the 5th floor. It consists of a 90 m<sup>2</sup> workshop, a 50 m<sup>2</sup> stockroom and a 22 m<sup>2</sup> fitting room in a single space plus two stockrooms of 42 m<sup>2</sup> and 22 m<sup>2</sup>. There is direct access to the freight lift.

### **B Plans**

- Main auditorium: plans and sections of the different possibilities
- Small venue: plans and sections of the different possibilities
- Studio: plans and sections.

**Plans in PDF, AutoCAD or Vectorworks format are available on request...**

# Main Venue full capacity : 752 seats +PWD



## Répartition sièges

- Sièges sur fosse d'orchestre 114 places
- Sièges sur gradin rétractable 241 places
- Sièges sur parterre fixe 112 places
- Sièges sur balcon complet 259 places
- Sièges sur Course 26 places
- Sièges PMR 4 places



Occupation de salle		
	Sièges IN	Sièges OUT
Fosse d'orchestre:	114	0
Gradin rétractable	241	0
Gradin fixe	112	0
Balcon	259	0
Coursives	26	0
<b>Total:</b>	<b>752</b>	<b>0</b>

## Titre spectacle

Mise en scène

### A3 GS Répartition Jauge totale

Lieu d'accueil: Bruxelles / Théâtre National / Grande salle

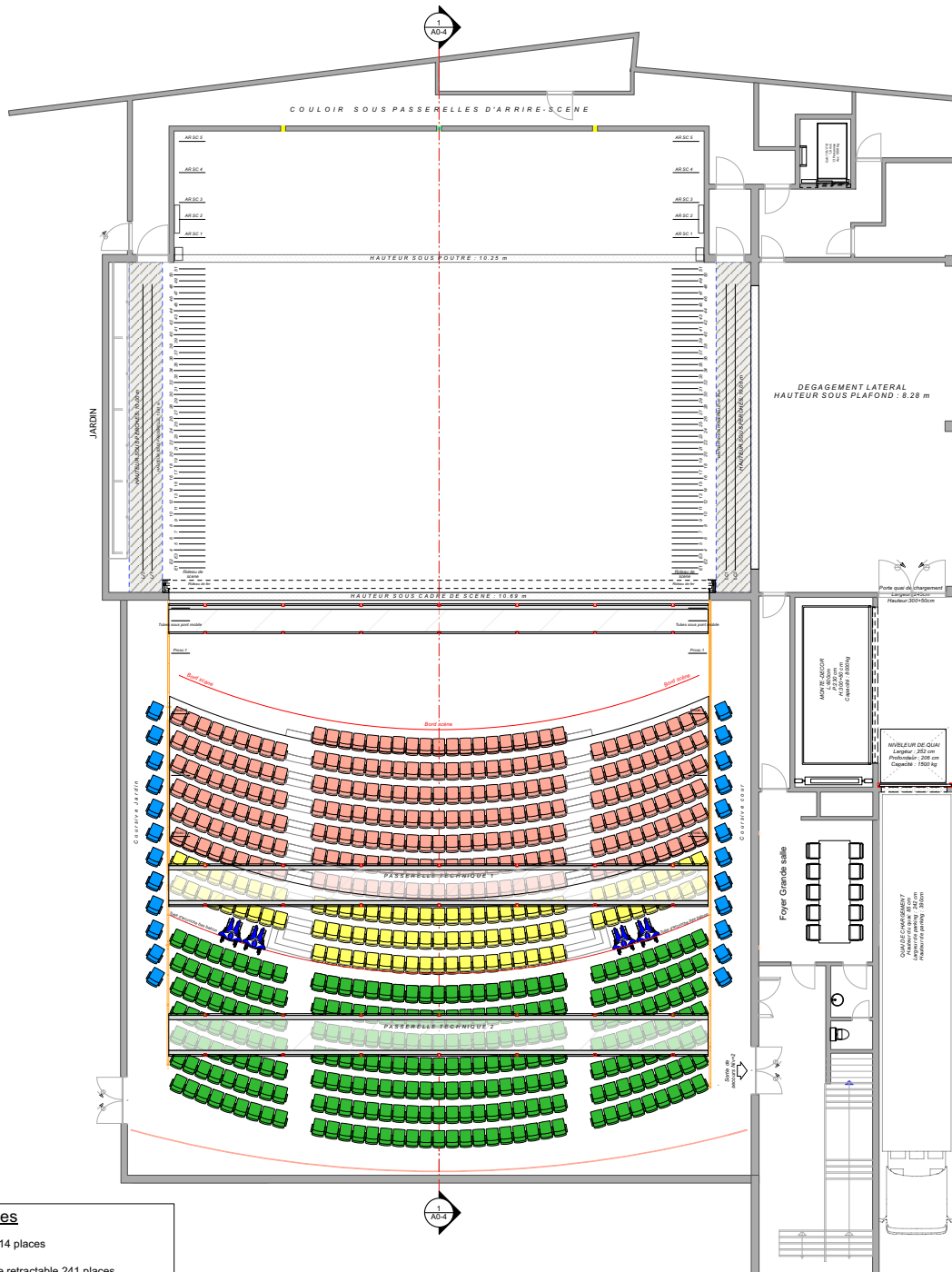
Saison: 2024 / 2025 Echelle: 1:150

Editeur: Editeur

Date de réalisation: 7/11/24



# Main Venue with orchestra pit : 638 seats + PWD



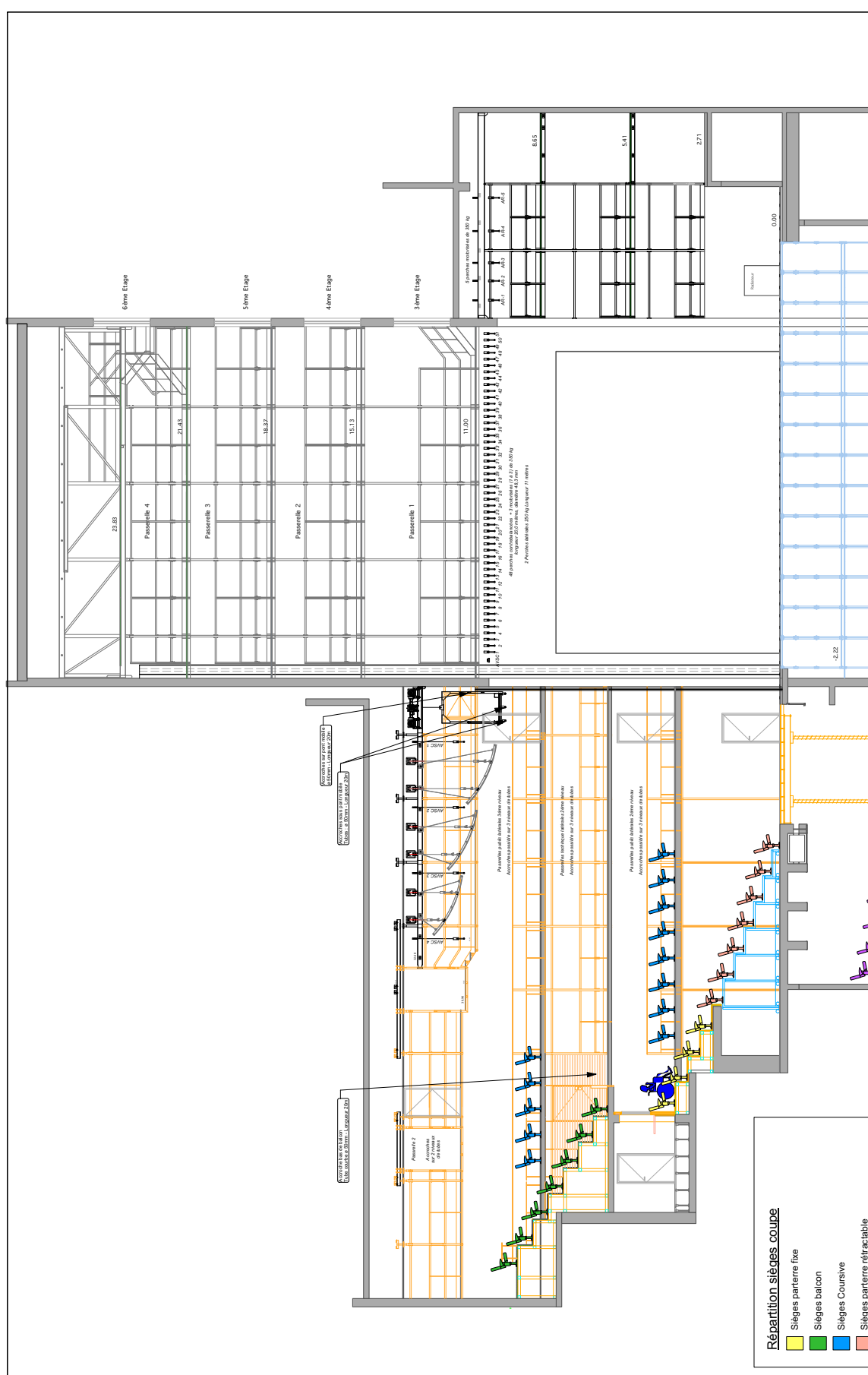
## Répartition sièges

- Sièges sur fosse 114 places
- Sièges sur Parterre retractable 241 places
- Sièges sur parterre fixe 112 places
- Sièges sur balcon 259 places
- Sièges sur Coursives 26 places
- Sièges PMR 4 places



Occupation de salle		
	Sièges IN	Sièges OUT
Fosse d'orchestre	0	114
Gratin retractable	241	0
Gratin fixe	112	0
Balcons	259	0
Coursives	26	0
<b>Total:</b>	<b>638</b>	<b>114</b>

Titre spectacle		
Mise en scène		
<b>A3 GS Répartition Jauge fosse relevée</b>		
Lieu d'accueil: Bruxelles / Théâtre National / Grande salle	Season: 2024 / 2025	Echelle: 1:150
Editeur: Editeur	Date de réalisation: 7/11/24	



**Répartition sièges coupe**

- Sièges parterre fixe
- Sièges balcon
- Sièges Course
- Sièges parterre rétractable
- Sièges PMR
- Sièges fosse orchestre
- Sièges fosse orchestre

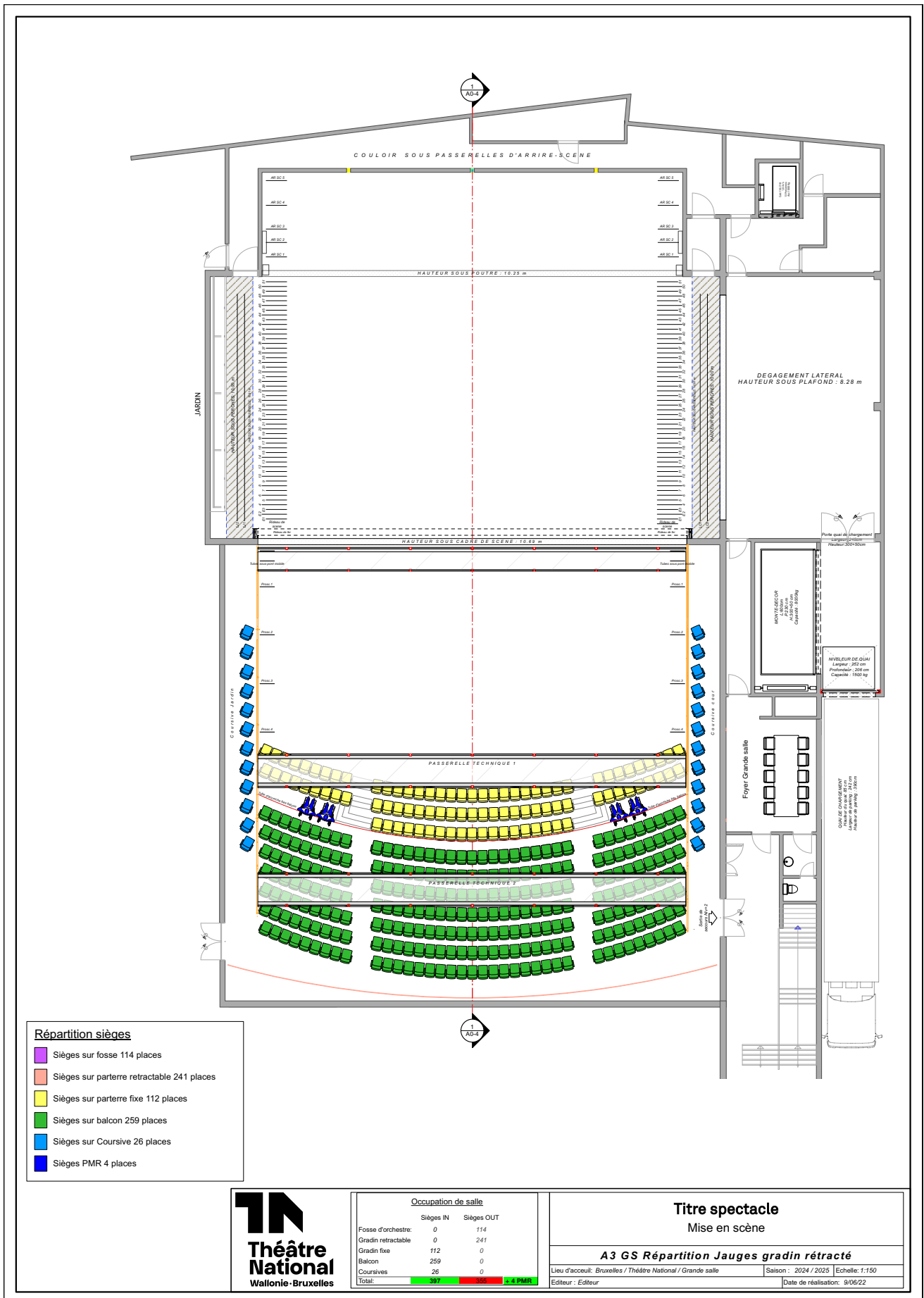
**Théâtre National**  
Wallonie-Bruxelles

**Titre spectacle**  
Mise en scène

**A0 GS Coupe configuration fosse relevée**

Lieu: Grand-E. Bouwibla / Théâtre National / Grand-salle  
Séjour: 2024 / 2025  
Date de réalisation: 14/11/24 | Echéché: 1/1/25

# Main Venue – seating retracted : 397 seats +PWD



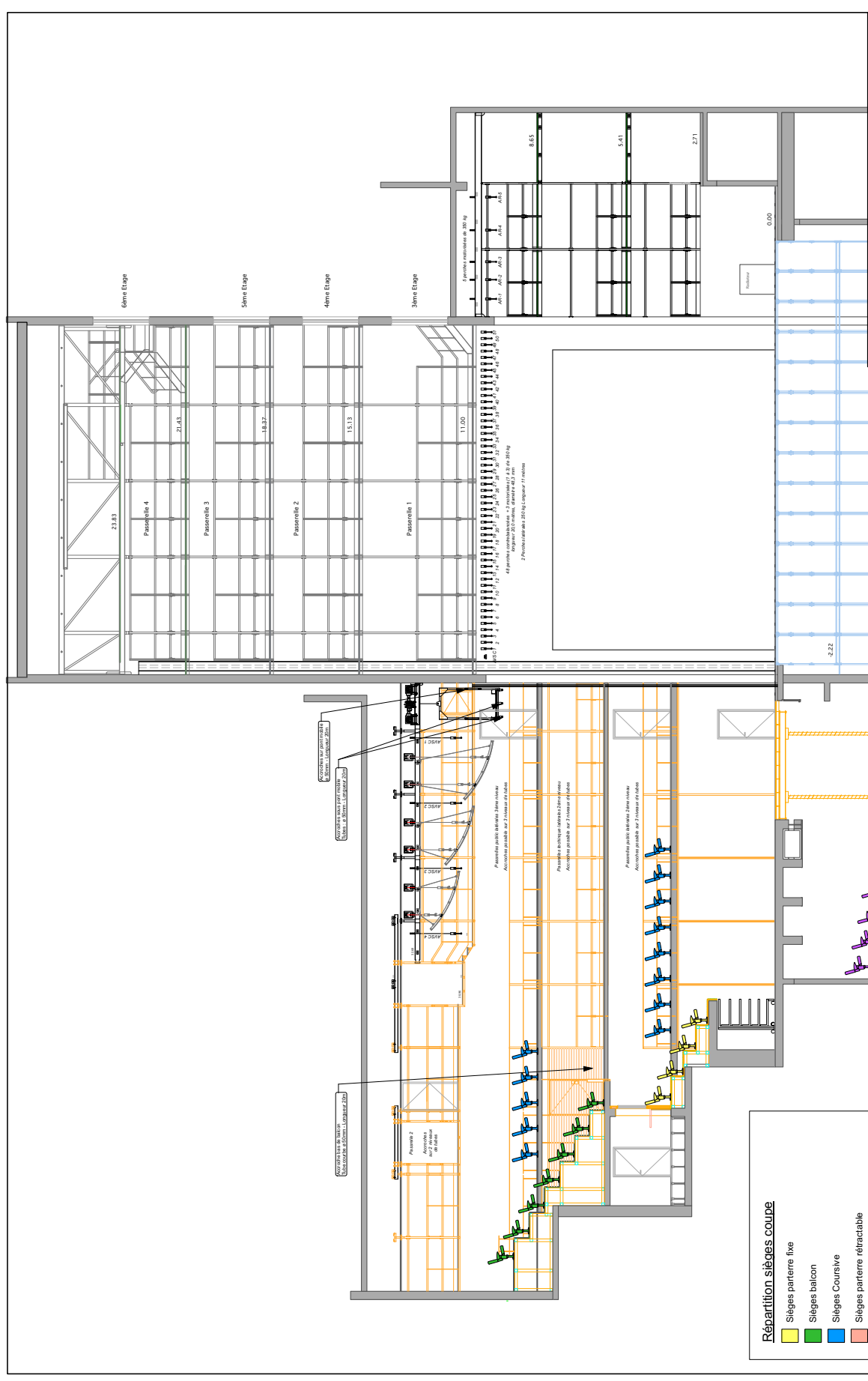
### Répartition sièges

- Sièges sur fosse 114 places
- Sièges sur parterre retractable 241 places
- Sièges sur parterre fixe 112 places
- Sièges sur balcon 259 places
- Sièges sur Course 26 places
- Sièges PMR 4 places



Occupation de salle		
	Sièges IN	Sièges OUT
Fosse d'orchestre:	0	114
Gradin retractable	0	241
Gradin fixe	112	0
Balcon	259	0
Coursives	26	0
<b>Total:</b>	<b>397</b>	<b>355</b>
		<b>+ 4 PMR</b>

Titre spectacle		
Mise en scène		
<b>A3 GS Répartition Jauges gradin rétracté</b>		
Lieu d'accueil: Bruxelles / Théâtre National / Grande salle	Saison : 2024 / 2025	Echelle: 1:150
Editeur : Editeur	Date de réalisation: 9/06/22	



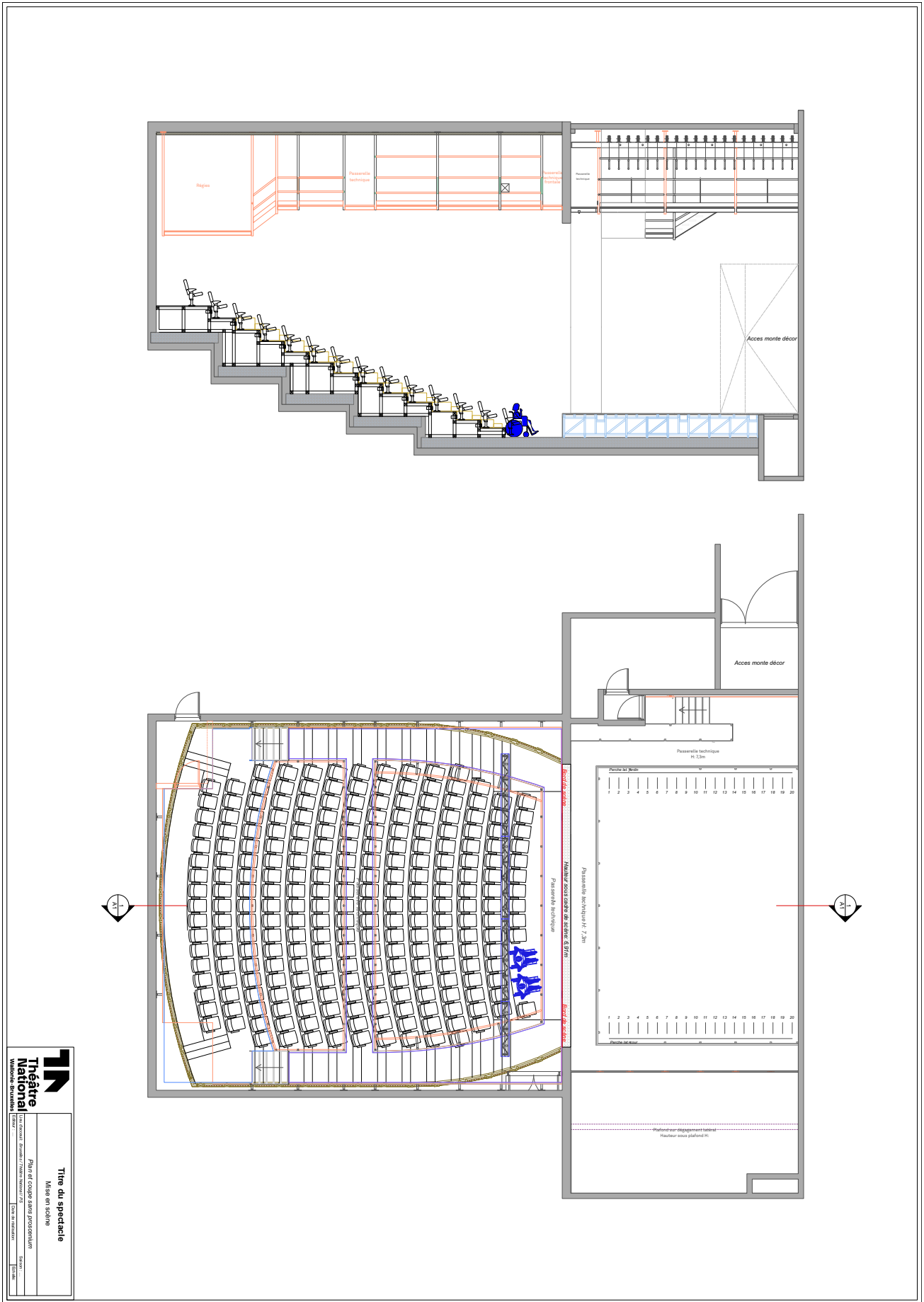
- Répartition sièges coupe**
- Sièges parterre fixe
  - Sièges balcon
  - Sièges Course
  - Sièges parterre rétractable
  - Sièges PMR
  - Sièges fosse orchestre
  - Sièges fosse orchestre

**Titre spectacle**  
Mise en scène

**AG GS Coupe configuration parterre rétracté**

Lieux choisis: Bruxelles / Théâtre National / Grande salle  
Séances: 20/07/2025  
Lieux de réalisation: 147104 / Durée: 11:00

**Salle J. Huisman without proscenium : 248 seats (238 with control booth in the audience) +PWD**



**Théâtre National de Wallonie-Bruxelles**

**Titre du spectacle**

Mise en scène

Plan de coupe sans proscenium

Scale: 1/50

Date: 10/10/2011

Author: [Name]



**The Studio : 236 seats (with control booth in the audience) +PWD**

